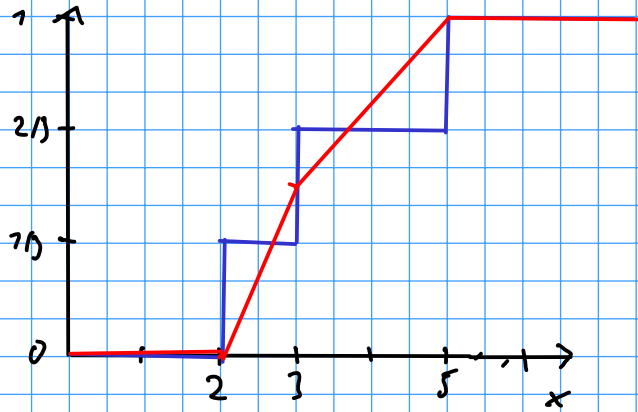


Empirische Verteilung

$$x = 2, 3, 5$$

$$n = 3$$



$$F_0(x) = \frac{1}{n} |\{i \in [1, n] \mid x_i \leq x\}|$$

$$F_1(x) = \text{Strecken mit } \Delta y = \frac{1}{n-1} \\ \text{und } \Delta x = x_{i+1} - x_i$$